



CBHC

Colorado Behavioral Healthcare Council

Connections Start Here

**Annual Training Conference
October 11 - 13, 2018**

Pre-Conferences: October 10, 2018

*Beaver Run Resort & Conference Center
Breckenridge, Colorado*

Greetings,

On behalf of the Colorado Behavioral Healthcare Council, we welcome you to our 2018 Annual Conference. This year's theme, "Connections Start Here," seeks to solidify the notion that we are all responsible for creating a culture of innovation in the field of behavioral health. During times of transition, we must continue to rely on the foundation we have created with our colleagues and community partners while continuing to foster new relationships.

As the healthcare system continues to adapt and change, it is essential that our behavioral health community remembers its foundation and history of success which is embedded in the importance of partnerships and collaboration. This has been our task for over a century. We have taken risks together; we have worked for a common vision; and we have reached out to our legislators and other elected officials to create much needed change.

As we have grown, we have worked together to fill in gaps for our communities. Our history is rich with these connections. For example, in the 1940s, it became even more evident that psychiatrists were desperately needed in rural areas of the state. This led to the creation of the "flychiatrist." Dr. Lynwood Hopple, a psychiatrist and pilot, began flying out of Denver to rural areas to provide services multiple times a week. This practice continued well into the 1960s, and its benefits were noted by the counties served. Through this partnership with Dr. Hopple, the community mental health center known today as The Center for Mental Health was formed in 1965 through a collaboration of the counties of Montrose, Ouray, and San Miguel.

As more areas across the state partnered together to make up the 17 community mental health centers that we have today, the need to connect became even greater, and in 1967, the association now known as the Colorado Behavioral Healthcare Council was formed as a tool for the centers to network, align values, and learn from one another. Those partnerships have expanded with enhancements to crisis and substance use services as a part of the growth of the community behavioral health system.

As we work together to create an environment that supports prevention, treatment, and recovery in the fields of mental health and substance use disorders, we are opening a window of opportunity for stronger human connections which help create a well-balanced, happy, and healthy society. We are stronger together than we are alone, and it is our hope that this gathering provides many opportunities to learn and grow together while strengthening those connections.

Sincerely,

Doyle Forrestal
CEO, CBHC



Ann C. Noonan
Conference Co-chair



Fernando Martinez
Conference Co-chair



Featured Speakers

General Session | *Rachael Keefe, DMin* | Thursday | 9:00am - 10:30am

Faith Communities: Potential Partners for Wellness

Keynote Johann Hari | Friday | 8:30am - 10:00am

Chasing the Scream: The War on Drugs



CBHC Awards Presentations

Mental Health First Aid Awards

Thursday | 8:45am-9:00am (*Breckenridge Ballroom*)

Golden Lightbulb & Golden Abacus Awards

Thursday | 6:15pm-6:30pm (*Colorado Ballroom*)

Board Member Awards

Special Board Recognition Breakfast, Training & Awards

Saturday | 7:30am - 11:45am (*Imperial Ballroom*)

Thursday Networking Reception

5:30pm-7:30pm (*Colorado Ballroom*)

Gather for our Networking Reception with hors d'oeuvres

6:15pm - 6:30pm | **Golden Abacus & Golden Lightbulb Awards**

2018 CBHC Conference

Planning Committee

Ann C. Noonan

2018 CBHC Conference Co-chair

Noonan Consults, LLC

Longmont, CO

Fernando Martinez

2018 CBHC Conference Co-chair

Chief Executive Officer

San Luis Valley Behavioral Health Group

Alamosa, Colorado

Doyle Forrestal

Chief Executive Officer

CBHC, Denver, CO

Barbara Becker

Director of Mental Health First Aid Colorado

CBHC, Denver, CO

Natalie Strom

Membership Services and Communications

Coordinator, CBHC, Denver, CO

Janice Curtis

Peer Support Services Manager

Mind Springs Health, Glenwood Springs, CO

Lance E. Lehigh

Chief Financial Officer

The Center for Mental Health, Montrose, CO

Evan Narotsky

Event & Outreach Specialist,

Community Reach Center, Thornton, CO

Pamela Vaughn

Director of Training and Consumer Advocacy

North Range Behavioral Health, Greeley, CO

Eric Smith

Manager of Training and Staff Development

Mental Health Center of Denver

Denver, CO

Angi Wold

Director of Operations, Addiction Research and

Treatment Services, University of Colorado,

Denver, CO



Colorado Behavioral
Healthcare Council

CBHC Members

Thank you to our member organizations!

Community Mental Health Centers

AllHealth Network
AspenPointe
Aurora Mental Health Center
Axis Health System
Centennial Mental Health Center
Community Reach Center
Health Solutions
Jefferson Center for Mental Health
Mental Health Center of Denver
Mental Health Partners
Mind Springs Health
North Range Behavioral Health
San Luis Valley Behavioral Health Group
Solvista Health
Southeast Health Group
SummitStone Health Partners
The Center for Mental Health

Managed Service Organizations

AspenPointe Health Network
Mental Health Partners
Signal Behavioral Health Network, Inc.

Crisis Service Organizations

Community Crisis Connection
Northeast Behavioral Health Partners
Southern Colorado Crisis Connection
West Slope Casa

Specialty Clinics

Asian Pacific Development Center
Servicios de la Raza

CREDITS

Continuing Education Unit Credits

NASW, NBCC, NAADAC

Continuing Education Unit Credits from: NASW, NBCC, NAADAC

Registration Fees

Register online today at www.cbhc.org

Pre-Conference Workshops | Wednesday, October 10, 2018

(Wednesday 8:00am - 5:00pm | Includes training, breakfast, lunch & coffee breaks)

\$150 | The Opioid Crisis and Your Community: What Will We Do Now?

Robert J. Valuck, PhD, RPh; Don Stader, MD; Terri Hurst, MSW; Lisa Raville, BA; Kiley Floren, MPH, CHES; Jess Fear, LPC; Christine O'Neill, LPC, LAC; Ann C. Noonan, MA, CAC III, LPC

\$150 | Unlocking Suicidal Secrets: New Thoughts on Old Problems in Suicide Prevention | *Shawn Shea, MD*

(Note: Pre-Conference fees are separate from conference fees below)

Conference Fees

(Note: Conference fees do not include the Pre-Conference rates above)

Full Conference Fee (CBHC Member) | \$475

Full Conference Fee (Non-member) | \$500

For Thursday/Friday/Saturday | (Thursday 8:00am - Saturday 11:45am)

(Includes Thursday networking reception, all conference sessions, breakfasts, lunches and coffee breaks).

Friday & Saturday Only Fee (2-Day) | \$350

For those who want to attend all FRIDAY & SATURDAY Only

(Includes Thursday networking reception & Friday and Saturday sessions, breakfasts, lunches and coffee breaks).

CBHC Conference Cancellation/Refund Policy

Conference registration fees, less \$100.00 administration fee, will be refunded upon written notice of cancellation, if received no later than August 1, 2018. *After that date, no refunds will be provided. There will be no provision for partial registration fees or refunds for activities not attended. Email cancellations to: Tracygmp@aol.com before August 1, 2018.*

Questions? Email Tracy at Tracygmp@aol.com or call 303-525-2811



Hotel Reservations

Beaver Run Resort & Conference Center
620 Village Road, Breckenridge, Colorado 80424

Call 1-800-525-2253 for reservations today!

Hotel rooms start at \$109 + tax and service charge

Be sure to mention you are attending the CBHC Conference to receive the discount rate.

Hotel registration web link: <http://alturl.com/uu5ix>

Group Rate Deadline: All reservations must be made by September 1, 2018 to receive the CBHC group rates. The group rate will be given on a first-come first-served basis until the block is full, so make your reservations early. If your organization has special hotel billing requirements for multiple rooms, please contact Beaver Run directly for assistance in coordinating your group hotel reservations.

Hotel Cancellation/Refund Policy: Beaver Run Resort & Conference Center
A one night's deposit is required at the time of booking. Reservations must be canceled at least 72 hours prior to arrival to receive refund, less a \$35.00 processing fee. Cancellations made fewer than 72 hours from arrival date are subject to a one night's cancellation fee. Reduction in length of stay or room type within the 72 hour penalty period, no shows, late arrivals, and early departures are considered cancellations, and are therefore non-refundable.

Deposit: A deposit of one night's room rate, in the form of a credit card payment or check, will be required when making an individual reservation. Neither CBHC nor Beaver Run will be coordinating roommate accommodations. Coordination of roommates and payment for rooms are the responsibility of the individual and the member organization making the reservation. The standard Beaver Run cancellation policy will apply.

Tax Exemption: To receive tax exemption for lodging, a tax-exempt certificate and agency check or credit card must be presented to the hotel upon arrival.

Relax, Play & Enjoy

Yoga

Start your morning *off* on Thursday, Friday and Saturday with 45 minutes of yoga before breakfast. *Instructors have been hired to teach classes just for conference attendees.*

Yoga will be in the Coppertop 2 room.

Resort Workout Facilities

All attendees staying at the Beaver Run Resort have complimentary access to the workout facilities located next to the pool in building 3.

Pool & Hot Tub

Take a dip in the indoor/outdoor pool or soak in a hot tub after a long day.

Massage

Get a chair massage in the CBHC Exhibit Hall or enjoy a relaxing massage in The Spa at Beaver Run in building 1. For spa appointments call: 970-453-8757. In-house dial ext. 8757.

Hiking

Take advantage of the beautiful mountains and trails surrounding Beaver Run. *Even a short 20 minute hike can change your day!*

Check out our Breckenridge Hospitality Table, located in the Convention Center, Third Floor Foyer, to get details about local tours, hiking trails, fly fishing, and mountain biking!

Get the Event App!



Easy access to:

Evaluations

Session Handouts

Session Schedule

Sponsors & Exhibitors

Speaker Information

Program & Updates

Available on all devices!

Browse to www.eventmobi.com/app/cbhc18
...follow the instructions on your device.



Network: Beaver Run Meeting
Open a browser on your device.

Voucher: CBHC

7:30am - 5:00pm | CBHC Registration Open | Third Floor Foyer

Pre-Conference Workshops | 8:00am - 5:00pm (Additional Fee Required)

Peak 17
Breckenridge
Ballroom



The Opioid Crisis and Your Community: What Will We Do Now?

Robert J. Valuck, PhD, RPh; Don Stader, MD; Terri Hurst, MSW; Lisa Raville, BA; Kiley Floren, MPH, CHES; Jess Fear, LPC; Christine O'Neill, LPC, LAC; Ann C. Noonan, MA, CAC III, LPC

From the emergency department to the detoxes, to working with prescribers and addressing stigma, from law enforcement to saving lives, this workshop will give you a practical overview of successful programming and community-level interventions to address the ever-growing problem of opiate misuse. This conference on the opioid crisis will explore and explain many aspects of the epidemic, with current information shared by well-respected leaders in the Colorado prevention, intervention, treatment and recovery worlds. The day will be focused on community-based solutions, and actions that can be readily implemented in your local region.

(See full workshop description, page 16.)

Schedule: 8:00am - 9:00am Breakfast & Networking
 9:00am - 10:30am Workshop
 10:30am - 10:45am Break
 10:45am - 12:30pm Workshop
 12:30pm - 1:00pm Lunch in place
 1:00pm - 2:30pm Workshop
 2:30pm - 3:00pm Break
 3:00pm - 5:00pm Workshop

Imperial
Ballroom



American
Foundation
for Suicide
Prevention

Unlocking Suicidal Secrets: New Thoughts on Old Problems in Suicide Prevention | *Shawn Shea, MD*

This one-day training (consisting of four workshops) provides participants with the state-of-the-art skills necessary to tackle some of the most difficult clinical situations facing experienced staff regarding suicide assessment and prevention, documentation of risk, treatment planning regarding suicide, and building resiliency. This full-day training is listed on the Zero Suicide Websites "Suicide Care Training Options" List.

(See full workshop description, page 17.)

Schedule: 8:00am - 9:00am Breakfast & Networking
 9:00am - 10:30am Workshop
 10:30am - 10:45am Break
 10:45am - 12:30pm Workshop
 12:30pm - 1:30pm Lunch in place
 1:30pm - 3:00pm Workshop
 3:00pm - 3:30pm Break
 3:30pm - 5:00pm Workshop

C Clinical **Bm** Board **Bu** Business/Upper Mgmt **Ic** Integrated Care

6:45am - 7:30am | Morning Yoga | Coppertop 2

7:45am - 5:00pm | CBHC Registration Open | Third Floor Foyer

7:45am - 7:30pm | Exhibit Hall Open | Colorado Ballroom

7:45am - 8:45am | Breakfast in Exhibit Hall | Colorado Ballroom

7:30am - 8:30am | Mental Health First Aid Breakfast | Base Nine Lounge

8:45am - 10:30am

Breckenridge
Ballroom

Awards: Mental Health First Aid Colorado Award

Join us at the beginning of the session for this special award!

General Session | Faith Communities: Potential Partners for
Wellness | Rachael Keefe, DMin



10:30am - 11:00am | Coffee Break in Exhibit Hall | Colorado Ballroom

11:00am - 1:30pm | MarComm Group (Includes Lunch) | Mercury Boardroom - Bldg. 4

11:00am - 12:00pm

Peak 11/12

#100 Medication Assisted Treatment: Risks and Rewards
W. Shaun Gogarty, MD



Imperial
Ballroom

#101 Performance Payments | Arnold Salazar



Coppertop 2

#102 Integrating SBIRT into Colorado School-Based Health
Centers with a Risk and Protective Factor Lens | Jodi Lockhart, BA,
CPSII & Kristina Green



Coppertop 3

#103 The Intersection of Behavioral Health and Public Health:
National Trends and a Colorado Call to Action
Shannon Breitzman & Gina Lasky, PhD, MAPL



Peak 17

#104 The Top Ten Things You Need to Know About the Opioid
Epidemic | Robert J. Valuck, PhD, RPh



12:00pm - 1:30pm | Lunch (See room locations below)

Lunch for all attendees (Colorado Ballroom)
Suicide Prevention Advocates Luncheon (Base Nine Lounge)
Training & Development Subcommittee Luncheon (Spencer's Private Dining Room)

1:30pm - 3:00pm

Peak 6/7/8

#200 Suicide Prevention in Colorado: Updates, Trends and
Opportunities for Collaboration | Sarah Brummett, MA, JD



Peak 9/10

#201 Growth Mindset | Miranda Botts, LPC, LAC




Peak 11/12

#202 Technology Innovation Network: Community Mental
Health Centers Collaborating in Digital Health | Mimi McFaul, PsyD



1:30pm - 3:00pm (cont'd)	
Coppertop 2	#203 Integration Innovation: Key Learnings from the SIM Cl Bu Ic Bi-Directional Integration Pilot Program <i>Donald W. Bechtold, MD; Jill Atkinson PhD, LP; Joseph (JC) Carrica III, EdD; Toni Moon, MA</i>
Coppertop 3	#204 Preparing for Changes in Revenue Recognition - Part 1 Bu <i>Ryan S. Reiff, CPA, FHFMA</i>
Imperial Ballroom	#205 Harm Reduction in Action! <i>Lisa Raville, BA</i> Cl
Peak 17 Breckenridge Ballroom	#206 Navigating the Relationship Between Spirituality and Mental Health <i>Wendy Kidd, MA, MDiv, LPC: Moderator Rachael Keefe, DMin; Jamie Adasi, MA, MEd; Debbie Stafford, MA, CAC III; Brandon Appelhans, Mdiv</i> Cl
3:00pm - 3:30pm Coffee Break in Exhibit Hall <i>Colorado Ballroom</i>	
3:30pm - 5:00pm	
Peak 6/7/8	#300 Untangling the Web: Understanding the Relationship Between Dementia & Behavioral Health Conditions <i>Amy Miller, LCSW</i> Cl
Peak 9/10	#301 Integrating Face-to-Face and Digital Care to Maximize Behavioral Health Access and Impact <i>Corey Cantrell, BA</i> Cl Bu
Peak 11/12	#302 Adapting Behavioral Health Treatment for Individuals with Traumatic Brain Injury <i>Lenore "Lenny" Hawley, MSSW, LCSW, CBIST</i> Cl
Coppertop 2	#303 Measurement-Based Care for BH Conditions: We Have Arrived! <i>Gina Lasky, PhD, MAPL & Lori Raney, MD</i> Bu Cl
Coppertop 3	#304 Continuation of Revenue Recognition and Changes in Not-For-Profit Reporting Model - Part 2 <i>Ryan S. Reiff, CPA, FHFMA</i> Bu
Imperial Ballroom	#305 Family Centered Treatment®: Implementing for Sustainable Outcomes <i>Stephanie Glickman, LCSW & Tim Wood, LPC</i> Cl
5:30pm - 7:30pm	
Colorado Ballroom	<h2 style="color: #0056b3; margin: 0;">Thursday Networking Reception</h2> <h3 style="color: #d4af37; margin: 0;">Golden Abacus & Golden Lightbulb Awards!</h3>

6:45am - 7:30am Morning Yoga Coppertop 2	
7:15am - 5:00pm CBHC Registration Open Third Floor Foyer 7:15am - 5:00pm Exhibit Hall Open Colorado Ballroom 7:15am - 8:15am Breakfast in Exhibit Hall Colorado Ballroom	
8:30am - 10:00am	
Breckenridge Ballroom	Keynote Chasing the Scream: The War on Drugs Johann Hari Sponsored by Colorado Access
10:00am - 10:30am Coffee Break in Exhibit Hall Colorado Ballroom	
10:30am - 12:00pm	
Peak 6/7/8	#400 Co-Response: Combining Behavioral Health and Law Enforcement Jessica M. Russell, MA, LPC, LAC & Cpl. Richard Jones
Peak 9/10	#401 Using Telehealth to Augment Integrated Care Programs: It's Easier Than You Think! Rachel Dixon
Peak 11/12	#402 Peer Specialty Services: A Recovery-Focused and Evidence-Based Practice Natalie Brown, MSW, LCSW; Ron Barenberg; Renee Schell, MA; Ashlyn McMillan
Coppertop 2	#403 Office of Behavioral Health Strategic Planning and Business Practices Camille Harding; Kayla Martin, JD; Andrew Martinez
Coppertop 3	#404 The Other Triple Aim: Data, Collaboration and Revenue Heather Dolan, MBA, HA, PMP & Bryan Gannon, LCSW
Imperial Ballroom	#405 Leveraging Technology to Promote Employee Wellbeing: Muse Meditation and Compassion Fatigue Jamie Adasi, MA, MEd; Whitney Bond, BA; Sarah Harrison, MNM; Karmen Thulin, PsyD
Peak 17 Breckenridge Ballroom	#406 RAE & HCPF Panel Robert Bremer; Shane Mofford, MA; Laurel Karabatsos, MA; Alonzo Payne, JD; Kari L. Snelson, LCSW, CHC; Meg Taylor, LPC
12:00pm - 1:30pm Lunch (see room locations below)	
Lunch for all attendees (Colorado Ballroom) Deputy Directors' Luncheon (Base Nine Lounge) CBHC Board of Directors' Luncheon (Imperial Ballroom)	
1:30pm - 3:00pm	
Peak 6/7/8	#500 Responder Strong™: A Movement for Emergency Responder Mental Health in Colorado and How You Can Help Rhonda Kelly & Peggy Hill

1:30pm - 3:00pm (Cont'd)		
Peak 9/10	#501 Using Community Connections for Strategic Naloxone Education and Distribution <i>Jess Fear, LPC & Kiley Floren, MPH, CHES</i>	CI
Peak 11/12	#502 Connections: Navigating Client Care and Collaborative Partnerships <i>Kristen Cochran-Ward, MSSW, LCSW; Usha Udupa, MD; Marybeth Rigali-Oiler, PhD</i>	CI
Coppertop 2	#503 What Do Board Members Need to Know: Effective Governance in Today's Environment <i>John F. Talbot, PhD</i>	Bm Bu
Coppertop 3	#504 Understanding and Reducing Unit Costs – Part 1 <i>David Wawrzynek, MBA</i>	CI
Imperial Ballroom	#505 The Neurobiology of Traumatic Stress and the Healing Power of Yoga: Presentation <i>Janine D'Anniballe, PhD, RYT</i>	CI
Breckenridge Ballroom	#506 Prometheus: Finding Opportunity and Making It Actionable <i>Shane Moffard, MA</i>	Bu CI
3:00pm - 3:30pm Coffee Break in Exhibit Hall <i>Colorado Ballroom</i>		
3:30pm - 5:00pm		
Peak 6/7/8	#600 Performance Payments <i>Arnold Salazar</i>	Bu CI
Peak 9/10	#601 Strength-Based Counseling <i>Cecelia B. Keelin, LPC</i>	CI
Peak 11/12	#602 Merging of Health Care Entities <i>Meggan Schilkie, MBA</i>	Bu Bm
Coppertop 2	#603 CBHC Policy Update <i>Frank Cornelia, MS, LPC; Moses Gur, MA; Gilbert Romero, JD</i>	CI Bm Bu Ic
Coppertop 3	#604 Understanding and Reducing Unit Costs – Part 2 <i>David Wawrzynek, MBA</i>	Bu
Imperial Ballroom	#605 The Neurobiology of Traumatic Stress and the Healing Power of Yoga: Practice <i>Janine D'Anniballe, PhD, RYT</i>	CI
Breckenridge Ballroom	#606 CBHC TED Talks: Illustrations of Best Practices in Behavioral Health <i>Sponsored by</i>  The Colorado Health Foundation™	CI Bm Bu Ic

Session Handouts:

Speaker session handouts will be posted to www.cbhc.org and the CBHC App on August 31st.



6:30am - 7:15am | Morning Yoga | Coppertop 2

7:30am - 12:00pm | CBHC Registration Open | Third Floor Foyer

7:30am - 8:30am | Breakfast | Colorado Ballroom

7:30am - 8:30am | Special Board Recognition Breakfast, Training & Awards

Half-Day Skills Training

8:30am - 11:45am

Imperial Ballroom	Board Training Half-Day Board Governance in a Time of Change <i>Carl Clark, MD</i>	Bm
Peak 11/12	Skills Training Half-Day Fostering Healthy Futures: Building Skills and Competencies for Youth in the Child Welfare System <i>Heather Taussig, PhD; Sarah Gallegos, LPC, RPT-S; Robyn Wertheimer-Hodas, LCSW</i>	Cl
Coppertop 2	Skills Training Half-Day What's Culture Got to Do With It? Cultural Humility in Clinical Supervision <i>Daryl Hitchcock, PhD, RPT-S & Maileen Hamto, MBA, MS</i>	Cl
Coppertop 3	Opioid Training Half-Day A Clinical Focus on Opioids: Opioid Use Disorder and Pregnancy <i>Angela Bonaguadi, LCSW, LAC, MAC; Kaylin A. Klie, MD, MA, FASAM; Daniele Wolff, MS, CAC III MAT in the Primary Care Setting & A Tale of Two Cities: MAT on the Western Slope and Eastern Plains Lesley Brooks, MD & JK Costello, MD</i>	Cl
8:30am - 10:00am		
Peak 9/10	#700 Therapy at Your Fingertips: Delivering Evidence-Based CBT Through Written Conversation <i>James R. Bonk, PhD, RN & Sheeba Omodele Ibidunni, MHSA</i>	Cl
10:00am - 10:15am Coffee Break in Exhibit Hall Colorado Ballroom		
10:15am - 11:45am		
Peak 6/7/8	#800 Adapting Mental Health Treatment for Youth With Intellectual & Developmental Disabilities <i>Anne Fogg, LPC</i>	Cl

Cl Clinical **Bm** Board **Bu** Business/Upper Mgmt **Ic** Integrated Care

Enjoy **Free** 

Network: Beaver Run Meeting

Open a browser on your device and enter:

Voucher | **CBHC**

Session Review & Evaluation

Let us know how we're doing!

**Paper EVALUATIONS are in your welcome packet
and will be handed out at sessions.**

You can also scan the QR code below, browse to www.eventmobi.com/app/cbhc18 or get the CBHC mobile App to rate each session and the 2018 conference.



**Turn in your Evaluations to the
CBHC registration desk for a chance to win an
Apple Watch!**

 **WATCH**
SERIES 3



Review the sessions you attend and complete the conference evaluation for a chance to win.

*One entry per conference attendee. Name and email must be included with the evaluation.



MENTAL HEALTH FIRST AID COLORADO



**KNOW
THE SIGNS**



**LEARN THE
ACTIONS**



**BE A
LIFELINE**



**UP
TO 90%**

of individuals with
mental disorders are
treatable.

1 IN 4

people will experience a
mental health challenge
or crisis in their lifetime.

50%

of all lifetime cases
of mental illness begin
before age 14.

**JOIN THOUSANDS OF OTHER COLORADANS
IN BEING A FIRST RESPONDER FOR YOUR
COMMUNITY'S MENTAL HEALTH.**

SIGN UP FOR A COURSE TODAY!

www.mhfacolorado.org

The Opioid Crisis and Your Community: What Will We Do Now?

From the emergency department to the detoxes, to working with prescribers and addressing stigma, from law enforcement to saving lives, this workshop will give you a practical overview of successful programming and community-level interventions to address the ever-growing problem of opiate misuse. This conference on the opioid crisis will explore and explain many aspects of the epidemic, with current information shared by well-respected leaders in the Colorado prevention, intervention, treatment and recovery worlds.



The day will be focused on community-based solutions, and actions that can be readily implemented in your local region. The presenters will attend the full session, so that we can all participate in a conversation about practical applications of the strategies being presented.

Then, the closing activities of the day will be assistance in selecting and making preliminary plans for action steps in your own community. This will be an excellent overview of the width and depth of the problem, but will focus on practical interventions in a variety of areas. You will have a chance to interact with professionals working on the front-lines of the Colorado response to this deadly Public Health disaster.

Robert J. Valuck is a Professor in the Departments of Clinical Pharmacy, Epidemiology, and Family Medicine at the University of Colorado Schools of Pharmacy, Public Health, and Medicine. Dr. Valuck is Director of the Center for Pharmaceutical Outcomes Research (CePOR) at the School of Pharmacy. His major areas of research include post-marketing studies of the beneficial and adverse effects of pharmaceuticals, with a primary emphasis on rare, serious adverse effects of psychotropic drugs. Dr. Valuck is also Coordinating Center Director of the Colorado Consortium for Prescription Drug Abuse Prevention, created by Governor Hickenlooper in 2013 to address the prescription drug abuse problem with a collaborative, statewide, inter-agency approach.

Don Stader, MD, FACEP is an emergency physician, innovator & entrepreneur. He practices at Swedish Medical Center in Englewood, CO where he serves as the departments' Associate Medical Director. Don holds a medical degree with honors from Baylor College of Medicine, where he was an Albert Schweitzer Fellow and attended emergency medicine residency at Carolinas Medical Center.

Terri Hurst, MSW is Policy Coordinator with the Colorado Criminal Justice Reform Coalition. She has over 15 years of experience in healthcare, behavioral health, harm reduction and drug policy reform.

Lisa Raville, BA grew up outside of Chicago, IL and graduated from DePaul University with a degree in Communications and a minor in Women's Studies. Lisa is the Executive Director of the Harm Reduction Action Center, a public health agency that works with people who inject drugs. Lisa has been with HRAC since 2009. Lisa's activist voice was cultivated by her experiences as an overnight homeless shelter coordinator, development work at a domestic violence agency, a former campaign manager for a CA County Supervisor, and an AmeriCorps VISTA at an AIDS agency. Lisa is the Vice President of the Board of Directors of the Colorado Criminal Justice Reform Coalition. Lisa is the co-chair of the Harm Reduction work-group for the Colorado Consortium on Prescription Drug Abuse Prevention. In 2014, Lisa won the Colorado Public Health Association Award for Excellence in Policy.

Kiley Floren, MPH, CHES has an MPH in Community Health Education. She works at the Health District of Northern Larimer County on projects of the Mental Health and Substance Use Alliance.

Jess Fear, LPC obtained her Masters in Counseling from DU and focuses on working the dual-diagnosis population. Jess worked for the Colorado Coalition for the Homeless and supervised an ACT team which served the highest utilizers of services. Jess began working at the Health District of Northern Larimer County and is focusing on large-scale behavioral health and substance use initiatives.

Christine O'Neill, LPC, LAC has worked in the mental health and substance use field for over ten years in a variety of acute and intensive services. Her experience with high-intensity clients has prepared her for the creative work she has been able to accomplish with addiction services at Withdrawal Management, Transitional Residential Treatment, and MAT programs. She is an advocate for MAT services and is active in both local and state initiatives around the opioid epidemic.

Ann C. Noonan, MA, CAC III, LPC has worked in a variety of SUD and MH settings over the 30+ years of her career. Her professional efforts are making system-level change to facilitate integration between mental health and substance abuse, and between behavioral health and physical health, moving us toward a whole-person health care system.

Suicide Prevention Pre-Conference

Wednesday (8:00am - 5:00pm) | Imperial Ballroom)



Unlocking Suicidal Secrets: New Thoughts on Old Problems in Suicide Prevention



This one-day training (consisting of four workshops) provides participants with the state-of-the-art skills necessary to tackle some of the most difficult clinical situations facing experienced staff regarding suicide assessment and prevention, documentation of risk, treatment planning regarding suicide, and building resiliency. This full-day training is listed on the Zero Suicide Website's "Suicide Care Training Options" List. | *Shawn Christopher Shea, MD is an internationally-acclaimed workshop leader and innovator having given over 850 presentations worldwide in the fields of suicide prevention, clinical interviewing, creating resiliency, and improving medication adherence. He is a frequent presenter at the annual meeting of the American Association of Suicidology and at the Cape Cod Symposium where his courses have received some of the highest evaluations in the 30 year history of the Symposium. Dr. Shea is the author of seven books and numerous articles including one of the classic texts in the field of suicide prevention, The Practical Art of Suicide Assessment. (See his full bio on the CBHC website.)*

Learning Objectives:

- Apply the principles of matrix treatment planning to enhance resiliency in both the patient and the clinician, including principles such as healing matrix effects, damaging matrix effects, and the red herring principle.
- Use the current state-of-the-art regarding risk, protective factors, and warning signs to better formulate suicide risk.
- Understand and be able to create better documentation of risk.
- Recognize and be able to utilize seven interviewing techniques for uncovering sensitive and taboo material: normalization, shame attenuation, the behavioral incident, gentle assumption, denial of the specific, the catch-all question, and symptom amplification.
- Apply the CASE Approach to uncover hidden suicidal ideation, actions, and intent as well as uncovering a dangerous patient's hidden method of choice for suicide.

#1 Workshop: The Art of Matrix Treatment Planning and the Quest for Happiness:

Suicide Prevention in a New Light – This workshop describes a model called “matrix treatment planning” that was developed to transform the types of stalled treatment plans that may lead to suicide. The model focuses upon a style of suicide prevention known as “upstream suicide prevention” which attempts to prevent suicides by instilling resiliency in people so that they do not develop suicidal ideation in the first place.

#2 Workshop: Effectively Using Risk and Protective Factors in Suicide Assessment and the Art of Sound Documentation: A refreshing look is given to the concept of arriving at a clinical formulation of risk using risk factors, protective factors, and warning signs. Dr. Shea delineates how to wisely use the above factors in a flexible fashion for arriving at a clinical formulation of risk that forms a powerful antidote to the “check-list” approach to performing a suicide assessment, so commonly seen today. Dr. Shea then proceeds to show how to document a suicide assessment, providing workshop participants with state-of-the-art tips for writing a sound document that is both a useful clinical tool and a written record that can keep the clinician “out of court.”

#3 Workshop: Innovative Interviewing Techniques for Uncovering Suicidal Ideation and Other Sensitive Material: The focus of this section of the workshop shifts to direct methods of uncovering dangerous secrets by understanding seven practical interviewing techniques. A powerful video demonstration of these interviewing techniques provides the workshop participant with a variety of gateways for uncovering the types of sensitive topics that may lead to suicidal thoughts, including: physical abuse, drug abuse, antisocial behavior, and incest.

#4 Workshop: The Delicate Art of Eliciting Suicidal Ideation: The Chronological Assessment of Suicide Events: The workshop will include with a compelling video demonstration of how these validity techniques can be woven into a flexible strategy for uncovering suicidal ideation and intent – the internationally acclaimed Chronological Assessment of Suicide Events (the CASE Approach).

General Session | Faith Communities: Potential Partners for Wellness | *Rachael Keefe, DMin*



Knowing when and how to gently challenge a potentially harmful belief system, and when to work with a supportive faith community can make a difference in outcomes. *Rachael Keefe, DMin* is the author of *The Lifesaving Church: Faith Communities and Suicide Prevention* and is currently pastor of Living Table United Church of Christ in Minneapolis, MN. She has a Master of Divinity degree from Princeton Theological School, another Masters degree (ThM) from Princeton, in Christian Education and Counseling, and a doctoral degree (DMin) from Andover Newton Seminary at Yale Divinity School, formerly Andover Newton Theological School.

#100 | Medication Assisted Treatment: Risks and Rewards



Medication Assisted Treatment (MAT) combined with behavioral health markedly improves outcomes for patients with opioid substance use disorder. Learn how to easily provide MAT while avoiding pitfalls.

W. Shaun Gogarty, MD is medical director for the Medication Assisted Recovery Center at Health Solutions in Pueblo. The MARC, in conjunction with behavioral health, helps patients with substance use disorder.

#101 | Performance Payments



Arnold Salazar has over 40 years of experience with the Colorado community mental health center system. This presentation will explore the evolution of the community mental health throughout his career and will offer a perspective on the most recent changes to the behavioral health system. This workshop will attempt to analyze long range impact on the community mental health system and focus on what the future might hold for community behavioral health for the next four years. The presentation will be interactive with the purpose of creating an ongoing dialog to the changes we are experiencing.

Arnold Salazar is the CEO of Colorado Health Partnerships, LLC. Arnold has had a long and extensive career in Colorado in the field of community mental health, which began in Alamosa at the San Luis Valley Mental Health Center. After completing a graduate degree at the University of Michigan, Arnold directed the center for 10 years prior to organizing SyCare LLC, a managed care company offering mental health services. In 2005 he took that idea one step further when he became CEO of Colorado Health Partnerships. Colorado Health Partnerships includes 8 non-profit community mental health center providers, and ValueOptions a for-profit management services provider. CHP covers 43 mostly rural counties in Colorado. Colorado Health Partnerships contracts with the Department of Health Care Policy and Financing, the state agency for the Medicaid mental health risk based contract. As CEO, Arnold's primarily responsibility is coordinating the activities of the partnership with the Department of Health Care Policy and Financing. As of January 1st, 2019 Arnold, will be moving on to the next phase of his career. The state of Colorado has combined the RCCO and Medicaid Behavioral Health program into one program. They also went from 5 BHO regions to 7 Regional Accountable Entities (RAE) which led to the breakup of Colorado Health Partnerships. As of January 2019 Arnold will be providing consulting services through Strategic Executive Advantage.

#102 | Integrating SBIRT into Colorado School-Based Health Centers with a Risk and Protective Factor Lens

CI

As a call to action to change the balance between the risk and protective factors associated with substance misuse, the CDHS - Office of BH and the Colorado Department of Public Health and Environment, School-Based Health Center Program have undertaken a new collaborative that seeks to universally screen adolescent clients in school-based health centers for substance use, provide tailored brief interventions, and refer to appropriate treatment when risk is elevated.

Jodi Lockhart, BA, CPSII is Program Manager, Community Prevention and Early Intervention, Office of Behavioral Health, Colorado Department of Human Services.

Kristina Green is the Screening, Brief Intervention, Referral to Treatment School-Based Health Center (SBIRT-SBHC) Project Coordinator at the Colorado Department of Public Health and Environment (CDPHE).

#103 | The Intersection of Behavioral Health and Public Health: National Trends and a Colorado Call to Action

CI
Bu

A focus on population health creates an imperative for behavioral health to leverage public health methods. The distribution of health outcomes, the health determinants, and the policies and interventions impacting populations are central levers for improving health.

Shannon Breitzman has expertise in marijuana legalization, opioid abuse, injury and violence prevention, and behavioral health promotion. Shannon coordinated the development and implementation of statewide violence and injury, mental health, and substance abuse prevention and intervention initiatives for the Colorado Department of Public Health for 15 years.

Gina Lasky PhD, MAPL is Principal, Health Management Associates, Psychology. Lasky is co-editor of Integrated Care: A Guide for Effective Implementation with Dr. Lori Raney.

#104 | The Top Ten Things You Need to Know About the Opioid Epidemic

CI

This session will give us a comprehensive overview of the opioid crisis using a fast-paced outline of topics of which we need to be aware of. This will be a great level-set for the day!

Robert J. Valuck, PhD, RPh (See bio, page 16.)

#200 | Suicide Prevention in Colorado: Updates, Trends and Opportunities for Collaboration

CI

This session will cover available data sources, current statewide initiatives and evidence-based practices, as well as highlight opportunities for agencies to further suicide prevention in their communities.

Sarah Brummett, MA, JD is Director of the Office of Suicide Prevention, CDPHE. The Office sets statewide priorities and works with state agencies and community organizations to develop and implement effective strategies.

CI Clinical

Bu Board

Bu Business/Upper Mgmt

IC Integrated Care

#201 | Growth Mindset

Growth Mindset is a hot topic in the education world. Mindset Psychology was identified by Carol Dweck, Professor of Psychology at Stanford University. This presentation identifies how mental health professionals can use growth mindset to facilitate more flexible thinking, reduce stagnation, and increase motivation in the clients we serve.

Miranda Botts, LPC, LAC received her Master of Arts in Counseling Psychology from the University of Denver and is a Licensed Professional Counselor as well as Licensed Addiction Counselor. She is a child & family therapist practicing in the Grand Junction area for the last 13 years. Miranda provides a variety of creative therapies including play, art, and music therapy.

#202 | Technology Innovation Network: Community Mental Health Centers Collaborating in Digital Health

This session will introduce participants to the evolving Technology Innovation Network (TIN) as a mechanism for engaging community mental health providers in shaping the field of digital health solutions for mental health, and adopting those that are most relevant in their work. Participants will then hear from 2-3 different community mental health center TIN members who will describe the technologies *Mimi McFaul, PsyD is a clinical psychologist who traces her way to the Center via a winding career path in correctional institutions, behavioral health systems improvement and a mental health technology start-up. She most recently served as Vice President of Campus Partnerships at Grit Digital Health, creating a mental health fitness center for college students from concept to product.*

#203 | Integration Innovation: Key Learnings from the SIM Bi-Directional Integration Pilot Program (Panel)

In 2015, four Community Mental Health Centers (CMHCs) began participating in a pilot project for Colorado's State Innovation Model (SIM) initiative which focuses on integrating primary care and prevention services into the community behavioral health setting.

Jill Atkinson, PhD, LP has been at Community Reach Center since 2010 and currently serves as the Clinical Director for Integrated Services. As Clinical Director, she oversees all outpatient offices, the Child Development Center, Mountainland Pediatrics, Vocational Services and Front Desk Operations. Focusing primarily on consumers with serious and persistent mental illness, she has been committed to providing top-quality care in the non-profit arena for more than 20 years.

Donald W. Bechtold, MD, DLFAPA, DFAACAP is the Vice President of Healthcare and Integration and Medical Director of Jefferson Center for Mental Health. He is a board-certified adult, child, and adolescent psychiatrist. Dr. Bechtold was a full-time faculty member of the University of Colorado School of Medicine until 2001 at which time he joined Jefferson Center.

Toni Moon, MA is Director of Population Health Management, Mental Health Partners. Toni has more than 20 years of experience in behavioral health care, including mental health treatment with adults, children and families, recovery-oriented program development and quality/process improvement.

Joseph (JC) Carrica III, EdD is the CEO of Southeast Health Group. Since 2005 he has shared his knowledge of Integrated Care Models, Alternative Care Options for Pain Management, and Medication Assisted Therapy strategies occurring in rural/frontier Colorado.

#204 | Preparing for Changes in Revenue Recognition - Part 1

Bu

Learn how changes in revenue recognition, including grants and contributions, will impact all organizations in the next year. The session will also explore how your financial statements will change under the Not-For-Profit reporting model.

Ryan S. Reiff, CPA, FHFMA is a partner with BKD CPA's and Advisors and a Fellow within the Healthcare Financial Management Association. He has over fourteen years' experience serving behavioral health organizations in Colorado.

#205 | Harm Reduction in Action!

Cl

This session will provide updates about syringe access and overdose prevention efforts in the state of Colorado. In the past eight years, seven pieces of harm reduction statewide legislation have been passed for a healthier and safer Colorado. As we continue in the midst of this overdose epidemic, we will talk about additional harm reduction efforts that are pushing forward in our state. Lisa will also talk about criminalization issues of drug use in general, regarding increased sentencing, archaic drug policies that brand folks for life, why they hesitate to call 911 in the event of an overdose, etc.

Lisa Raville grew up outside of Chicago, IL and graduated from DePaul University with a degree in Communications and a minor in Women's Studies. Lisa is the Executive Director of the Harm Reduction Action Center, a public health agency that works with people who inject drugs. Lisa has been with HRAC since 2009. Lisa's activist voice was cultivated with her experiences as an overnight homeless shelter coordinator, development work at a domestic violence agency, a former campaign manager for a CA County Supervisor, and an AmeriCorps VISTA at an AIDS agency. Lisa is the Vice President of the Board of Directors of the Colorado Criminal Justice Reform Coalition. Lisa is the co-chair of the Harm Reduction work-group for the Colorado Consortium on Prescription Drug Abuse Prevention.

#206 | Navigating the Relationship Between Spirituality and Mental Health

Cl

Discover how to build bridges with local faith leaders, elected officials and mental health providers. Come away inspired to build a bridge of understanding in your mental health service agency.

Wendy Kidd, MA, MDiv, LPC has been serving Gunnison Congregational Church, United Church of Christ (GCC-UCC) since April, 2015. She has a Master of Divinity (MDiv) from the Iliff School of Theology (Denver, CO) and is a Licensed Professional Counselor (LPC) with over 25 years of experience in the mental health field.

Jamie Adasi, MA, MEd serves as the Director for Faith & Spiritual Inclusiveness at the Mental Health Center of Denver. Jamie brings eight years of experience in social justice, well-being, technology and workplace culture.

Debbie Stafford, MA, CAC III has a Masters in Christian Counseling, and a CAC III. Debbie is a Full Status Domestic Violence Treatment Provider, former Colorado State Representative, and is the Faith Based Coordinator and Legislative Liaison with the Aurora Mental Health Center.

Brandon Appelhans, MDiv received his MDiv in Leadership and is the Co-founder and Executive Director of My Quiet Cave, Creating Spaces for Faith and Mental Health.

Rachael Keefe, DMin (See bio, page 18.)

#300 | Untangling the Web: Understanding the Relationship Between Dementia & Behavioral Health Conditions CI

Treating mental health conditions in someone with dementia can pose challenging questions for a clinician. This session will help clinicians understand the relationship between mental health conditions and dementia, how to differentiate the two, behavioral symptoms of various forms of dementia, and how to effectively provide mental health treatment to people with dementia as well as their caregivers. *Amy Miller, LCSW is Senior Reach Coordinator & National Consultant at Jefferson Center.*

#301 | Integrating Face-to-Face and Digital Care to Maximize Behavioral Health Access and Impact CI Bu

The use of apps is becoming universal in our culture and is rapidly gaining acceptance in behavioral health treatment. Today, we will learn how digital tech can enhance your services.

Corey Cantrell has worked for the Center for Mental Health since 2012, and is currently the Communications/PR Manager. Corey is passionate about using technology to address client needs.

#302 | Adapting Behavioral Health Treatment for Individuals with Traumatic Brain Injury CI

This session will define common sequelae of traumatic brain injury, emphasizing implications for behavioral health. Evidence-based strategies for adapting treatment for individuals with TBI will be described.

Lenore “Lenny” Hawley, MSSW, LCSW is a Counselor and Research Clinician at Craig Hospital, with over 30 years’ experience providing treatment, program development, advocacy, and research related to individuals with Traumatic Brain Injury.

#303 | Measurement-Based Care for Behavioral Health Conditions: We Have Arrived! Bu CI

We all remember it – Adolescence. A whole-person, collaborative approach to mental health and wellbeing are essential in supporting a young person’s transition into adulthood.

Gina Lasky PhD, MAPL is Principal, Health Management Associates, Psychology. Lori Raney, MD and Lasky are co-editors of Integrated Care: A Guide for Effective Implementation and deeply involved in helping sites implement measurement-based care to improve clinical outcomes and contain costs.

#304 | Continuation of Revenue Recognition and Changes in Not-For-Profit Reporting Model - Part 2 Bu

Learn how changes in revenue recognition, including grants and contributions, will impact all organizations in the next year. The session will also explore how your financial statements will change under the Not-For-Profit reporting model.

Ryan S. Reiff, CPA, FHFMA (See bio, page 21.)

#305 | Family Centered Treatment®: Implementing for Sustainable Outcomes



FCT is an evidence-based family preservation model of home-based treatment devoted to the preservation of families through research, training, and development.

Tim Wood, MS, LPC is the Executive Director of the FCT Foundation.

Stephanie Glickman, MSW, LCSW is Program Consultation Director, FCT Foundation.

Each has 10+ years experience with the development, provision, and implementation of FCT.

Friday | Sessions & Speakers

Keynote | Chasing the Scream: The War on Drugs | Johann Hari



Sponsored by Colorado Access

While writing the bestselling book *Chasing the Scream*, Johann Hari discovered that the drug war has very different motives and results than those described by our businesses and governments. Not only has strictly-enforced prohibition claimed countless victims to incarceration, poverty, and murder around the world, but it's actually led to more addicted users—the opposite of its touted purpose. In this keynote, Hari traces the development of a global moral injustice, highlighting the previously-untold story of how Billie Holiday was stalked and killed by the founder of the war—and what this tells us about what's motivated it ever since. He relates the stirring testimonies of people whose lives have been transformed by ill-conceived policies, and the doctors and activists resolutely trying to change them. And he talks, with inspiring examples, on the alternative policies that show a clear way forward. From the killing fields of northern Mexico, home of some of the world's most dangerous cartels, to the teeming US prison system, to nations like Portugal that choose to pursue innovative solutions, this keynote condenses Hari's years of deep reporting into a riveting talk on the war on drugs: its human and economic tolls, and its compassionate, economically-sound solutions.

Johann Hari is the author of The New York Times bestselling book Chasing the Scream, the product of his four-year, 12-country, 30,000-mile journey into the war on drugs. Called “breathtaking” by The Guardian, “gripping” by The Financial Times, and “riveting” by the San Francisco Chronicle, Chasing the Scream: The First and Last Days of the War on Drugs explores three startling truths: Drugs are not what we think they are. Addiction is not what we think it is. And the drug war has very different motives to the ones we have seen on our TV screens. Hari's viral TED Talk—viewed online now nearly 12 million times—based on the book, is a funny, fascinating, and moving look at the ways in which we turn to addiction as a response to conditions of isolation and disengagement in our lives. In his new book, the instant New York Times bestseller Lost Connections, Hari turns his empathetic lens onto depression, discovering, as with drugs and addiction, that everything he thought he knew was wrong.

#400 | Co-Response: Combining Behavioral Health and Law Enforcement **Cl**

Explore both the behavioral health and police officer perspective on Pueblo's Co-Response program. Get information on the data outcomes and unique dynamics of this program.

Jessica M. Russell, MA, LPC, LAC has a Master's degree in counseling and human services. She is the acting Director of Crestone Recovery Services at Health Solutions specializing in forensic and co-occurring disorder treatment.

Cpl. Richard Jones is US Army Retired, Special Operations Command 1986-2011. He serves as a Corporal in the Pueblo Police Department (PPD) 1997-Current, PPD Instructor Crisis Intervention Techniques, and Pueblo Metro Bomb Squad, Senior EOD Technician.

#401 | Using Telehealth to Augment Integrated Care Programs: It's Easier Than You Think! **Cl**
Bu

Telehealth enables providers to reach patients where they are, efficiently coordinate with other members of a patient's care team, maximize resources, and make money in the process.

Rachel Dixon is experienced in the clinical, operational, and technological implementation of telehealth. She has worked with numerous Medicaid-focused organizations to design and implement programs in various settings including primary care, rural hospital, mental health center, and residential.

#402 | Peer Specialty Services: A Recovery-Focused and Evidence-Based Practice **Cl**

The Clubhouse model is a strong example of Peer Specialty Services in an empowering and supportive environment. The Clubhouse experience has been proven to result in positive outcomes for many members (clients), including better employment rates, cost effectiveness, a significant decrease in hospitalizations, reduced incarcerations, improved well-being, and better physical and mental health. Seasoned Clubhouse Colleagues will share the International Clubhouse Model, benefits and outcomes, and provide personal testimonies from Clubhouse members.

Natalie Brown, MSW, LCSW is Program Supervisor of Spirit Crossing Clubhouse and Individualized Placement and Support Program with SummitStone Health Partners. Her mental health experience began in 1992, in residential treatment for children with severe emotional disturbance and survivors of abuse. Her professional development training includes: Trauma Informed Care, Motivational Interviewing, Dialectical Behavioral Therapy, and Clubhouse Model of Rehabilitation.

Ron Barenberg has been a member of Spirit Crossing Clubhouse since December 2007. Ron completed Clubhouse Colleague training in 2013, has presented at several Clubhouse conferences and community speakers panels, and leads Wellness education groups regularly. He volunteers for Special Olympics and ARO recreation programs throughout the year.

Renee Schell, MA in Rehabilitation Counseling from University of Northern Colorado, is Program Director of Frontier House (Accredited Clubhouse Model), and the Individualized Placement and Support Program at North Range Behavioral Health.

Ashlyn McMillan has been a member of Frontier House since 2012. She completed Clubhouse Colleague Training at an International Training base in 2017, implemented an action plan for program growth and development, and attended the Clubhouse International Seminar in 2017.

#403 | Office of Behavioral Health Strategic Planning and Business Practices

At this workshop the Office of Behavioral Health will cover the Division's strategic planning efforts along with contract and business practice updates. This session will cover joint OBH and CBHC contract committee work group efforts.

Camille Harding is a Licensed Professional Counselor in Colorado and operated a private practice serving youth and families for the past 20 years. In 2009, Camille left full-time direct service and joined the Mental Health Center of Denver to Manage the Child and Family Outpatient Clinical Teams. Camille joined the state in 2012 as the Quality Health Improvement Section Manager with Health Care Policy and Financing. Camille currently serves as the Division Director of Community Behavioral Health for the Office of Behavioral Health at the Colorado Department of Human Services.

Kayla Martin, JD is a Colorado-licensed attorney and graduate of the University of Denver Sturm College of Law. She drafts and coordinates Office of Behavioral Health's contracts with community providers.

Andrew Martinez is the Budget Manager for the Office of Behavioral Health, Division of Community programs. He has 25 years of professional financial experience in government and the private sector. Andrew has been with the Office of Behavioral Health for 12 years. His areas of expertise cover budget, accounting, contracting procurement and legislative fiscal analysis. Prior to the Office of Behavioral Health Andrew was a senior contract administrator for the Division of Youth Corrections for seven years. Andrew began his career as a budget analyst with the Department of Human Services in 1995.

#404 | The Other Triple Aim: Data, Collaboration and Revenue

This session will look closely at the data elements and also the community and internal structures necessary to successfully increase revenues.

Heather Dolan, MBA, HA, PMP Business Development Director at AuMHC has been in the field for over 20 years with an expertise in connecting internal and community systems to improve revenue generation.

Bryan Gannon, LCSW Deputy Director at Aurora Mental Health Center has been in the field for over 20 years with expertise in using data-analytics to guide clinical decision-making.

#405 | Leveraging Technology to Promote Employee Wellbeing: Muse Meditation and Compassion Fatigue

Muse Meditation Technology is an innovative way to organizationally promote wellbeing and address Compassion Fatigue. Meditation can decrease stress; when staff quiet their minds, they are more present in their work.

Whitney Bond, BA has been with the Mental Health Center of Denver for over eight years. She is an Executive Assistant for Medical Services – assisting with projects in suicide prevention, mindfulness, and staff wellness.

Sarah Harrison, MNM has a Masters in Nonprofit Management and is certified in Psychiatric Rehabilitation. As the Quality Improvement Project Manager, she focuses on clinical initiatives and has a passion for health and employee engagement.

Karmen Thulin, PsyD has worked in forensic, private practice, and community mental health settings. She has a focus on the role trauma exposure plays in the retention of clinicians from marginalized groups.

Jamie Adasi, MA, MEd (See bio, page 21.)

#406 | RAE & HCPF Panel



Session Description: TBD

Rob Bremer, PhD has been with Colorado Access since 1999. Dr. Bremer is responsible for the company's strategic behavioral health and primary care provider partnerships. Prior to his current role as vice president of integrated care, he led the expansion of Access Behavioral Care into Northeastern Colorado. Dr. Bremer has also served as the behavioral health quality manager and the deputy director of Access Behavioral Care. He was previously an assistant professor at the University of Colorado and has worked as a clinician at the Mental Health Center of Denver. Dr. Bremer also currently serves on the Mile High Health Alliance's executive committee as their co-chair. He is a member of the American College of Healthcare Executives.

Shane Mofford, MA is director of the Rates and Payment Reform Division at the Department of Health Care Policy and Financing and has been with the Department for a little under eight years. In this role, Shane oversees rate setting for the Department's managed care programs, inpatient and outpatient hospitals, FQHC/RHCs, waiver programs, and components of the general fee schedule. Additionally, Shane is integrally involved in the development and implementation of many of the Department's payment reform efforts including managed care incentive programs, behavioral health reforms, and primary care reform.

Laurel Karabatsos, MA is the Director of the Delivery System and Payment Innovation Division at the Colorado Department of Health Care Policy and Financing. Laurel leads the Department's work innovating, testing and refining new ways to deliver and pay for health services. She is committed to finding ways to make health care work better for Health First Colorado (Colorado's Medicaid Program) members while controlling costs for the state, to ensure the long-term viability of Health First Colorado for Coloradans who need it. Most recently, Laurel has been leading reform through the Accountable Care Collaborative, a program that gives Health First Colorado members their full benefits while emphasizing coordinated care and good health outcomes. She laid the foundation for a thoughtful, Step Wise approach to reform that makes the most of Colorado's strengths while moving the state toward greater accountability for health care spending. Laurel and her team continue to build on this work by testing payment and delivery reform innovations within the Accountable Care Collaborative model. Laurel's work with Health First Colorado began in 2001 when she managed the Quality Improvement section of the Department.

Kari L. Snelson, LCSW, CHC is Executive Director for Northeast Health Partners, the RAE for Region 2.

Meg Taylor, LPC is the Program Officer, Region 1 Regional Accountable Entity Rocky Mountain Health Plans.

Alonzo Payne, JD Prior to his role in Health Colorado, Alonzo served as Chief Administrative Officer/In-House Counsel at Valley Wide Health Systems, Inc. for more than seven years. As a vocal advocate of maintaining a strong, safe, and effective health care safety net system in Colorado, Alonzo has volunteered with nonprofit boards of directors, including the San Luis Valley Behavioral Health Group and NARAL Pro-Choice Colorado.

#500 | Responder Strong™: A Movement for Emergency Responder Mental Health in Colorado and How You Can Help

CI

Suicide, associated with frequent trauma exposure, is currently recognized as the leading occupational killer of law enforcement, fire, dispatch and EMS. Learn about ResponderStrong™, an innovative collaboration between emergency responders and the National Mental Health Innovation Center with the goal of creating better mental health supports for responders and their families.

Rhonda Kelly is Project Manager for ResponderStrong™. She worked as an oceanographic researcher, RN, and served seventeen years as a firefighter/paramedic before joining the National Mental Health Innovation Center in 2017.

Peggy Hill is Deputy Director of the National Mental Health Innovation Center. She leads Center initiatives focused on building mental health literacy across professions outside of health care.

#501 | Using Community Connections for Strategic Naloxone Education and Distribution

CI

Learn practical steps and relevant resources to create a strategic plan for community naloxone distribution by creating and leveraging partnerships in the sectors that need it most.

Jess Fear, LPC works at the Health District of Northern Larimer County on Mental Health and Substance Use Alliance projects and has an MA in Counseling.

Kiley Floren, MPH, CHES is the project implementation coordinator for projects of the Mental Health and Substance Use Alliance of Larimer County as a part of the Community Impact Team of the Health District of Northern Larimer County. Her background is in community health research and evaluation, with special interest in taking a public health approach to behavioral health topics.

#502 | Connections: Navigating Client Care and Collaborative Partnerships

CI

Discussing unique program focused on early identification and intervention for children and young adults age 0-24, through bridging psychiatric care and assessment services, and closing the communication loop between community providers, primary care, school and families.

Kristen Cochran-Ward MSSW, LCSW received her Masters of Science in Social Work from the University of Texas, Arlington and is a licensed clinical social worker. Kristen is the Program manager for Mental Health Connections, a partnership between the Health District of Northern Larimer County and SummitStone.

Usha Udupa, MD is a Board-Certified Child and Adolescent Psychiatrist, CAYAC Psychiatrist.

Marybeth Rigali-Oiler, PhD is Counseling Psychology, Licensed Psychologist, CAYAC Clinical Psychologist.

CI Clinical **Bm** Board **Bu** Business/Upper Mgmt **Ic** Integrated Care

Session Handouts:

Speaker session handouts will be posted to www.cbhc.org and the CBHC App on August 31th.



#503 | What Do Board Members Need to Know: Effective Governance in Today's Environment **Bm**

In today's rapidly changing behavioral health environment, effective Board governance is both more critical, and more challenging, than ever before. This practical, interactive session will explore the role of today's Board members, challenges and opportunities.

John F. Talbot, PhD is Vice President, Corporate Strategy/Chief Strategy Officer at Jefferson Center for Mental Health, he is responsible for leading the development and execution of Jefferson Center's strategic plan, leading key strategic initiatives, and managing key external relationships. Prior to joining Jefferson Center, Dr. Talbot was Executive Vice President at OPEN MINDS, a national research and consulting firm which provided consultation, training and operational assistance to behavioral health providers, nonprofit organizations, and managed care organizations across the country. Areas of focus for consultation and training include strategic planning, the development of successful strategic alliances, board development, organizational re-engineering, operations management, marketing, the development of business plans, management and leadership development, and change management.

#504 | Understanding and Reducing Unit Costs – Part 1 **Bu**

As the Behavioral Health reimbursement market shifts there is a new focus on reducing costs while delivering and demonstrating value. This session will outline steps to re-engineer and understand unit costs and will focus on activity-based costing, target costing and re-engineering processes to return value.

David Wawrzyniek, MBA is a Senior Associate for OPEN MINDS, a management consulting firm specializing in serving health and human services markets. David has more than 40 years of experience in public behavioral health and in his career has worked as a Substance Abuse Counselor, Mental Health Clinician/Supervisor, Clinical Program Director and Executive Management CFO. David has joined his clinical training and experience with his business/financial training and experience to bring a unique perspective and set of skills to the efficient and effective management of behavioral health services. As a member of Executive management David has designed, implemented and monitored systems to support Information Technology, Human Resources, billing, budgeting, financial modeling and reporting, site operations, risk management, security, and change management. In recent years David has focused on the development of analytic modeling tools, communication platforms, and knowledge management supports to transform raw data into meaningful information to enable more effective strategic and operational insights and decision-making.

#505 | The Neurobiology of Traumatic Stress and the Healing Power of Yoga: Presentation **CI**

This workshop will explore the neurobiological and psychological impact of trauma and introduce trauma-informed yoga as a supplemental healing intervention. Participants will learn the basics about how traumatic stress affects the nervous system and how yoga can help reduce trauma symptoms and facilitate students' re-connection to their bodies.

Janine D'Anniballe, PhD, RYT is a licensed psychologist and a nationally-recognized expert in sexual assault, neurobiology of trauma, secondary traumatic stress, and treatment for survivors. She currently serves as the Director of Trauma Services at Mental Health Partners in Boulder, Colorado.

#506 | Prometheus: Finding Opportunity and Making It Actionable

Bm

This session will provide an overview of the Prometheus tool leveraged by the Department of Health Care Policy and Financing to identify opportunities to reduce cost and improve outcomes for clients. Department staff will demonstrate the tool, discuss key findings, and talk about the collaborative processes to make the insight actionable.

Shane Mofford, MA (See bio, page 26.)

#601 | Strength-Based Counseling

Ci

New research has proven that using your specific strengths will help you in work and life. Using your strengths will improve decision-making and executive functioning which leads to more confidence and success.

Cecelia B. Keelin, LPC is a seasoned trainer and counselor passionate about helping others discover their potential in both work and personal lives. She previously held positions in corrections, community mental health, psychiatric treatment, and corporate psychology.

#602 | Merging of Health Care Entities

Bu

Bm

Mergers are an important strategic tool for organizations to accomplish their goals, preserve access to needed services and maintain their missions. Positioning yourself pro-actively in search of partners can ensure that you enter into merger planning and negotiations from a place of strength and leadership. This session includes specific approaches to navigating the planning phases, negotiations and execution. This will be specific to mental health providers in the context of the current broader healthcare policy landscape.

Meggan Schilkie, MBA is Principal, NYC Office of Health Management Associates support providers, payers and policymakers in delivering innovative, sustainable, value-based behavioral health care.

Ci Clinical

Bm Board

Bu Business/Upper Mgmt

Ic Integrated Care

Session Review & Evaluation

Let us know how we're doing!

**Paper EVALUATIONS are in your welcome packet
and will be handed out at sessions.**

You can also scan the QR code below, browse to www.eventmobi.com/app/cbhc18 or get the CBHC mobile App to rate each session and the 2018 conference.



#603 | CBHC Policy Update

How did Behavioral Health fare in 2018 and what's on the horizon for 2019?

Join CBHC's policy team to understand how your legislators' actions affect how you will be providing services in your community.

Frank Cornelia, MS, LPC is the Director of Government & Community Relations for CBHC. Before joining CBHC in 2012, he was a clinical professional with years of experience providing care to diverse client populations. Although he is no longer a practicing counselor, he finds his clinical skills continue to be useful as a registered lobbyist. Frank holds a Bachelor's Degree in Psychology from the University of Minnesota and a Master's Degree in Health & Human Development from Montana State University.

Moses Gur, MA is the Director of Policy and Member Engagement for CBHC. He holds a Master of Arts in Forensic Psychology from the University of Denver where he studied the intersection of mental health and the legal system. His experience ranges from direct services, professional development, and policy analysis across every step of the sequential intercept model. Before joining the CBHC policy team, he was a policy fellow for the Substance Abuse and Mental Health Service Administration.

Gil Romero, JD is a Principal/Attorney with Capitol Success Group, a government affairs and lobbying firm he started in 1999. He is currently the lead lobbyist for CBHC. Gil served in the Colorado House of Representatives from 1984 – 1998; eight of those years he served on the powerful Joint Budget Committee. He is a former Judge Advocate General and a Major in the Army National Guard. He holds a Juris Doctorate Degree from the University of Colorado Law School, and a Bachelor of Arts Degree in Political Science, University of Colorado, with a Master's Degree from Harvard University.

#604 | Understanding and Reducing Unit Costs – Part 2

The session will take the concepts and processes discussed in Understanding and Reducing Unit Costs – Part 1, and will apply them using two case studies to demonstrate the development and application of financial models.

David Wawrzynek, MBA (See bio, page 28.)

#605 | The Neurobiology of Traumatic Stress and the Healing Power of Yoga: Practice

We will do an hour-long yoga practice, so please wear comfortable clothes in which you can move. Yoga mats will be provided.

Janine D'Anniballe, PhD, RYT (See bio, page 28.)

#606 | CBHC Ted Talks: Illustrations of Best Practices in Behavioral Health

Sponsored by The Colorado Health Foundation

CBHC is proud to present this special session to highlight some of the excellent work being done through our community behavioral health system. Outstanding programs nominated for the Golden Lightbulb & Golden Abacus Awards have been invited to present short talks on their programs and participate in a discussion about how they have achieved success.

#700 | Therapy at Your Fingertips: Delivering Evidence-Based CBT Through Written Conversation

CI

We break clinical, geographic, and cultural boundaries by providing measurable, improved mental health through online, written therapy. Telemedicine is an opportunity to minimize effects of provider shortages, transportation issues, and stigma.

James R. Bonk, PhD, RN is a licensed Registered Nurse and Psychologist, with experience in developing and implementing Mental Health and Substance Abuse programs. He holds a Bachelor's and Master's degrees in Nursing and a PhD in Psychology from the University of Arizona.

Sheeba Omodele Ibidunni, MHSA has worked in Medicaid to implement programs, and to design and test new care delivery models. She earned a Bachelor's from Cornell University and a Master of Health Services Administration from the University of Michigan.

#800 | Adapting Mental Health Treatment for Youth With Intellectual & Developmental Disabilities

CI

Clinical characteristics will be presented for differentiating diagnoses. Cultural considerations will be addressed so clinicians can better address psychopathology. Also covered are adaptations to individual, family, and group therapy, and case management will also be covered.

Anne Fogg, LPC is a Master's level Licensed Professional Counselor who specializes in adapted treatments for populations with dual diagnoses. She currently works at Intercept in Aurora Mental Health and is a member of the community response team within the agency.

CI Clinical **Bm** Board **Bu** Business/Upper Mgmt **Ic** Integrated Care



**Turn in your Evaluations to the
CBHC registration desk for a chance to win an
Apple Watch!**

Apple WATCH
SERIES 3



Special Board Recognition Breakfast, Training & Awards**Bm**

This session examines the importance of a governance structure for boards during a time of extraordinary change in healthcare. Together we will explore elevating your board from operations and programming to strategy and governance.

Carl Clark, MD is the President & CEO of the Mental Health Center of Denver. Dr. Clark inspires a culture of innovation and well-being by delivering strengths-based, person-centered, culturally-proficient services as well as employing trauma-informed, evidence-based practices. Under his leadership, the Mental Health Center of Denver has recently been named a finalist for a 2018 World Changing Idea Award from Fast Company Magazine, and recently won the 2018 Excellence in Behavioral Healthcare Management Award from the National Council for Behavioral Health. The Mental Health Center of Denver is proud to be a Denver Post Top Work Place for six years running.

Half-Day Skills Training

Fostering Healthy Futures: Building Skills and Competencies for Youth in the Child Welfare System**CI**

Fostering Healthy Futures is an evidence-based positive youth development program. Learn methods to engage pre-adolescents and adolescents involved in the child welfare system through contextually-sensitive skill building and mentorship activities.

Heather Taussig, PhD is a clinical psychologist and a Professor at the University of Denver's Graduate School of Social Work. Her work focuses on developing prevention programming for children with child welfare involvement.

Sarah Gallegos, LPC, RPT-S is a counselor and program manager at the Aurora Mental Health Center who has served in the role of Fostering Healthy Futures Group Supervisor and trainer.

Robyn Wertheimer-Hodas, LCSW is the Co-Director of Programming and Dissemination for the Fostering Healthy Futures program. In this role she is responsible for training in both the mentoring and skills components.

What's Culture Got to Do With It? Cultural Humility in Clinical Supervision**CI**

Cultural self-awareness is key to enhancing everyday communications and interactions with co-workers and clinical supervisees. By becoming aware of how we bring dimensions of our cultural identities to work, we can identify possible biases that may interfere with how we relate with others. We will discuss integrating this perspective using competency-based and reflective supervision tools.

Daryl Hitchcock, PhD, RPT-S is a clinical psychologist and the Program Manager of the Early Childhood and Family Center at Aurora Mental Health Center. He is a California endorsed Mental Health Specialist for children 0-5 years and Reflective Practice Mentor.

Maileen Hamto, MBA, MS serves as Equity & Inclusion Manager for Aurora Mental Health Center. A Certified Diversity Professional (CDP) through the Society for Diversity, she leads diversity and inclusion initiatives with a specific focus on advancing health equity.

Half-Day Opioid Skills Training

A Clinical Focus on Opioids: Opioid Use Disorder and Pregnancy

This session examines the importance of a governance structure for boards during a time of extraordinary change in healthcare. Together we will explore elevating your board from operations and programming to strategy and governance.

Angela Bonaguidi, LCSW, LAC, MAC is the Director of Adult Outpatient at Addiction Research and Treatment Services (ARTS), the clinical program within the Division of Substance Dependence, University of Colorado, Anschutz Medical Campus, Department of Psychiatry.

Dr. Kaylin A. Klie, MD, MA, FASAM is a dually board-certified physician in Family Medicine and Addiction Medicine. She has special clinical and research interest in perinatal addiction. She is the founder of the Denver Health and University of Colorado OB Addiction Medicine clinics, which serve pregnant and mothering women with integrated perinatal medical care and substance use disorder treatment. Dr Klie serves as the Associate Director for the Addiction Medicine Fellowship at University of Colorado, where she enjoys teaching fellows, residents and students about caring for people with substance use disorders.

Daniele Wolff, MS, CAC III is the Director of The Haven. She has over twenty years of experience working with a female, substance-using population. Daniele received her Bachelor of Arts Degree in Psychology from the University of Colorado Denver and her Master of Science Degree in Counseling from Grand Canyon University.

MAT in the Primary Care Setting & A Tale of Two Cities: MAT on the Western Slope and Eastern Plains

The presenters will describe the issue of maternal opioid use in pregnancy. We will also discuss gender-specific considerations in the assessment and treatment of opioid use among pregnant women as well as treatment options for opioid use among pregnant women.

Dr. Lesley Brooks, MD is an experienced family physician and chief medical officer with a demonstrated history of service on behalf of underserved Coloradans since 1992. Dr. Brooks is a strong healthcare services professional with a Doctor of Medicine focused in Medicine from University of Colorado Anschutz Medical Campus. She is skilled in Family Medicine, Addiction Medicine, Reproductive Health, Healthcare Management, and working with Physicians.

Dr. JK Costello, MD is a physician and public health professional in Colorado. His career goal is improving the efficiency and effectiveness of health care in America and right now the emphasis is on substance use disorder care systems. He has worked on substance use care for large health plans, harm reduction agencies, states bureaus, and public health agencies. He is detailed enough to write policy for syringe access program treatment initiative and big-picture enough to create alternative payment models for Western Colorado.



Colorado Behavioral
Healthcare Council



Exhibit Passport

Stamp all Exhibitor Logos on the Exhibit Passport in your welcome packet.

Fill out your name on the card and turn into the CBHC Registration Desk.

The winner will be mailed a \$100 Gift Card.



 Vivitrol Aristada	 a-train® marketing communications inc.	 blackbaud® » power your passion	 catalyst CORPORATE FULL	 CEDAR SPRINGS Part of the CBHC Family	 Colorado ACCESS
 Local Services	 CORHIO	 CTN Colorado Telehealth Network	 Cordant Health Solutions™	 CSC CREDIT SERVICE COMPANY, INC. ACCOUNTS RECEIVABLE & PROFESSIONALS	 Denver Springs There's hope. There's help.
 Devereux ADVANCED BEHAVIORAL HEALTH	 DOMINION DIAGNOSTICS CELEBRATING 20 YEARS 1997-2017	 genOa healthcare	 GENOMIND®	 HiMS	 IMA
 Janssen medicines a Johnson & Johnson company	 West Hand	 LifeSafer People and Technology for Safer Communities	 MOUNT SAINT VINCENT Life Becomes Better MSVHealth.org	 myStrength	 NetSMART
 neurocrine BIOSCIENCES	 ODYSSEY SOFTWARE	 OPEN MINDS	 Peer Assistance Services	 PsychPros STAFFING & EXECUTIVE SEARCH	 PROVO CANYON SCHOOL ESTABLISHED: 1971
 ROCKY MOUNTAIN	 SUMMITSTONE HEALTH PARTNERS	 Streamline Healthcare Solutions	 The Echo Group echoman.com	 COLORADO Office of Behavioral Health Department of Public Health	 valant The platform for behavioral health

*One entry per conference attendee.

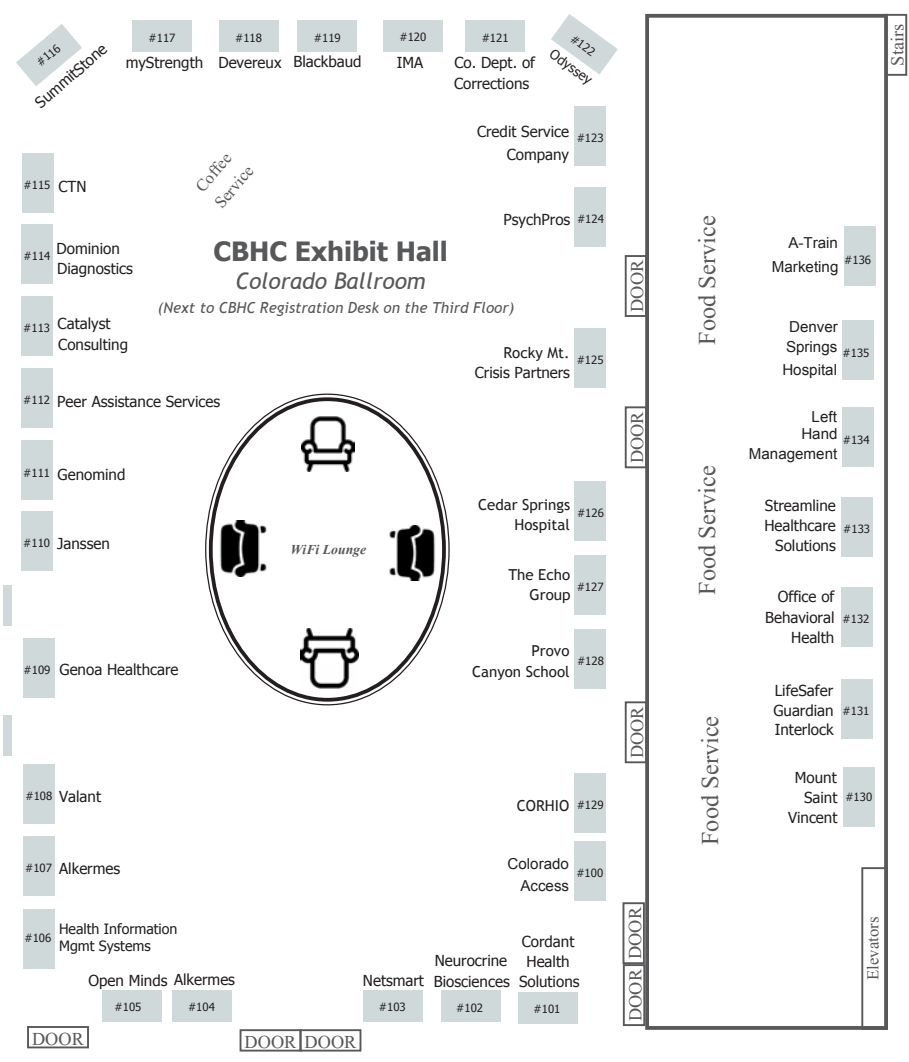


CBHC

Colorado Behavioral Healthcare Council



Network: Beaver Run Meeting
Open a browser on your device and enter:
Voucher | CBHC



Thank You to Our Partners in Education!

The Colorado Behavioral Healthcare Council would like to acknowledge and express its sincere appreciation for the exhibitors and sponsors who are participating in our CBHC Annual Training Conference.



**American
Foundation
for Suicide
Prevention**

AFSP Colorado Chapter | *Sponsor of Unlocking Suicidal Secrets: New Thoughts on Old Problems in Suicide Prevention* | 8200 S Quebec St., #A3207, Centennial, CO 80112 | 303-565-9215 | www.afsp.org/colorado

The American Foundation for Suicide Prevention is dedicated to saving lives and bringing hope to those affected by suicide. AFSP creates a culture that's smart about mental health through education and community programs, develops suicide prevention through research and advocacy, and provides support for those affected by suicide.



**#104 | Alkermes plc & #107 | Alkermes Inc.
852 Winter Street, Waltham, MA 02451-1420
MA 02451 | 801-234-9597 | www.alkermes.com**

Alkermes plc is a global bio-pharmaceutical company developing innovative medicines for the treatment of central nervous system (CNS) diseases. The company has a diversified commercial product portfolio and a substantial clinical pipeline of product candidates for chronic diseases that include schizophrenia, depression, addiction and multiple sclerosis. Headquartered in Dublin, Ireland, Alkermes plc has an R&D center in Waltham, Massachusetts; a research and manufacturing facility in Athlone, Ireland; and a manufacturing facility in Wilmington, Ohio.



**#136 | A-Train Marketing Communications, Inc. | 125 S. Howes St., Ste. 502, Ft. Collins, CO 80521 | 970-419-3218
www.atrainmarketing.com**

A-Train Marketing can help you build brand recognition, promote participation, expand your client base, and increase revenues. From branding and websites to digital and print advertising campaigns, we are dedicated to driving results that normalize conversations about behavioral health and ensure that the ones who need you become loyal advocates for life.



#119 | Blackbaud | 65 Fairchild Street, Charleston, SC 29492 | 843-216-6200 | www.blackbaud.com

Leading uniquely at the intersection point of technology and social good, Blackbaud provides software, services, expertise, and data intelligence that empowers and connects people to advance the social good movement. We serve the entire social good community, which includes nonprofits, foundations, corporations, education institutions, healthcare institutions, and the individual change agents who support them.

 #113 | Catalyst Counseling | 495 Uinta Way, Suite 120,
Denver, CO 80230 | 720-245-7390
www.catalystcounselingpllc.com

Catalyst is a group private practice of licensed, EMDR-trained clinicians serving teens and adults throughout the Denver Metro area with Medicaid and Aetna insurance. We also developed the Community Assessment and Coordination of Safety (CACS) Suicide Risk Assessment App for helping professionals engaging clients in assessment, resources, and safety planning.

 #126 | Cedar Springs Hospital | 2135 Southgate Road,
Colorado Springs, CO 80906 | 719-633-4114
www.cedarspringshospital.com

Inpatient & Outpatient behavioral health and psychiatric treatment for children, adolescents and adults. Specialty programming available for children as young as 2 years; dedicated Residential Treatment Center for adolescents; Dual Diagnosis Rehabilitation for adults; and acute crisis stabilization for all ages. Also offering Outpatient Medication Management, PHP and IOP services.



#100 | Colorado Access | *Sponsor of Keynote*
11100 E. Bethany Drive, Aurora, CO 80014
720-744-5500 | www.coaccess.com

Colorado Access is a local, nonprofit health plan that provides access to behavioral and physical health services for Coloradans. Their mission is to increase access to high-quality care for all Coloradans. Colorado Access currently serves the behavioral health needs of Medicaid recipients in Denver County and Northeast Colorado and partners to serve those in Adams, Arapahoe and Douglas counties.



#121 | Colorado Department of Corrections | 1250 Academy
Park Loop, Colorado Springs, CO 80910 | 719-226-4525
www.colorado.gov/cdoc

The mission of the Colorado Department of Corrections is: To protect the citizens of Colorado by holding offenders accountable and engaging them in opportunities to make positive behavioral changes and become law abiding, productive citizens.



#129 | Colorado Regional Health Information Organization
(CORHIO) | 4500 Cherry Creek South Dr., Suite 820,
Denver, CO 80246 | 720-285-3200 | www.corhio.org

CORHIO empowers people, providers and communities by providing the information they need to improve health. We manage one of the country's largest and most successful health information exchange (HIE) networks.



#115 | Colorado Telehealth Network (CTN) | 7335 East
Orchard Road, Greenwood Village, CO 80111
720-489-1630 | www.cotelehealth.com

Maximize access to health care services, especially in underserved regions of the state, through information and communications technology.

Cordant Health Solutions™ #101 | Cordant Health Solutions | 12015 East 46th Ave., Suite 220, Denver, CO 80239 | 844-848-5955
www.cordantsolutions.com

Cordant Health Solutions™ is at the forefront of combating today's opioid epidemic through its network of drug testing laboratories and pharmacies. Cordant is committed to providing solutions for payers, clinicians and agencies involved with substance use disorder, criminal justice and pain management. Cordant is one of the only healthcare companies that offers monitoring and risk assessment tools through its innovative drug testing options and full-service, high-touch pharmacies that specialize in complex management and dispensing of controlled substances.



#123 | Credit Service Company, Inc. | 2150 Lelaray Street, Colorado Springs, CO 80909 | 800-467-3766 ext. 1007
www.credit-service-company.com

CREDIT SERVICE COMPANY, INC.

Since 1947, Credit Service Company, Inc.'s healthcare provider clients have been entrusting us to collect their accounts receivables and our integrity, accountability and efficiency contribute to our success. We offer competitive rates on a contingency basis and are experienced in all stages of a patient's revenue cycle. CSC is licensed and registered in 44 states and based in Colorado Springs.



Denver Springs
There's hope. There's help.

#135 | Denver Springs Hospital | 8835 American Way, Englewood, CO 80112 | 720-643-4300 | www.denversprings.com

Denver Springs is a psychiatric hospital that offers both inpatient and outpatient mental health and addiction services for adults and adolescents. We offer integrated treatment programs designed to work with individuals through each step of recovery.



#118 | Devereux Colorado | 8405 Church Ranch Blvd., Westminster, CO 80021 | 303-466-7391 | www.devereuxco.org

Devereux Colorado is a 75 year old organization serving children and adolescents with behavioral and psychiatric issues. Our community services program offers outpatient therapy, intensive home-based services and medication management. The campus-based program in Westminster offers residential and day treatment services, in addition to the crisis stabilization unit.



DOMINION
DIAGNOSTICS
CELEBRATING 20 YEARS | 1997-2017

#114 | Dominion Diagnostics | 211 Circuit Drive North Kingstown, RI 02852 | 877-734-9600
www.DominionDiagnostics.com

Dominion Diagnostics, a CAP-accredited and CLIA-certified national medical laboratory, is the premier laboratory provider of advanced clinical quantitative urine drug monitoring services for Addiction Treatment programs, Behavioral/Mental Health providers, Physician offices and Pain Management practices. Dominion is the exclusive provider of state-of-the-art clinical reporting tools, including its new Comprehensive Analysis of Reported Drugs (CARD)™.



#109 | Genoa Healthcare | 707 South Grady Way, Renton, WA 98057 | 800-519-1139 | www.genoahealthcare.com

Genoa Healthcare Company is the nation's leading provider of pharmacy services dedicated to the behavioral health community and those affiliated with managing the cost and quality of their care.



#111 | Genomind | 2200 Renaissance Boulevard, Suite 100,
King of Prussia, PA 19406-2755 | 877-895-8658
www.genomind.com

Genomind® is a unique personalized medicine platform that brings innovation to healthcare around the world. Genomind, comprised of pioneering scientists and thought leaders in brain health and genetics, delivers actionable insights to clinicians, healthcare partners and individuals to improve the quality of human life.



#106 | HiMS | 1117 N. Third St., Phoenix, AZ
85004 | 866-779-2575 | www.hmsfirst.com

HiMS advances the health care community to better serve patients by delivering customizable enterprise software solutions and outstanding customer service through employee empowerment and innovation.



#120 | IMA, Inc. | 1705 17th Street, Denver, CO 80202
303-615-7478 | www.imacorp.com

IMA is a full-service insurance and employee benefits brokerage & consulting firm. As the 28th largest broker in the country, IMA is 100% employee owned and offers a full range of risk management, insurance, employee benefits, total rewards and retirement plan services.



#110 | Janssen Pharmaceuticals, Inc. | 1125 Trenton
Harbourton Rd., Titusville, NJ 08560 | 800-526-7736
www.janssen.com/us/ | www.JanssenPharmaceuticalsInc.com

Janssen Pharmaceuticals, Inc. is a pharmaceutical company of Johnson & Johnson that provides medicines for health concerns in several therapeutic areas, including diabetes, mental health, pain management and cardiovascular disease.



#134 | Left Hand Management | 88 Inverness Circle East,
Suite A-206, Englewood, CO 80112 | 303-637-9000
www.lefthandmgmt.com

Left Hand Management was created to assist behavioral health providers in navigating Medicaid and commercial insurance systems for the benefit of their clients. Our consulting services include Medicaid and commercial insurance enrollment, documentation auditing and training, billing, claims denial management, and revenue tracking and program development. Need a Hand?



#131 | LifeSafer / Guardian Interlock / PAS | 4290 Glendale
Milford Rd., Cincinnati, OH 45242 | 513-407-5880
www.lmgholdings.com

LifeSafer helped launch the ignition interlock industry in 1991. We've stayed at the forefront of the field, providing a growing number of clients with reliable technology and customer care. Guardian Interlock Systems has been the leading manufacturer of affordable, high-quality breath alcohol ignition interlock devices.



#130 | Mount Saint Vincent | 4159 Lowell Blvd, Denver, CO
80211 | 303-458-7220 | www.msvhome.org

Mount Saint Vincent is a treatment center for children with severe behavioral and emotional challenges due to mental illness, trauma, abuse, or neglect. Using innovative therapeutic techniques, including the Neurosequential Model of Therapeutics, our programs help children and their families reach their full potential within their homes, schools, and communities.

 **myStrength** #117 | myStrength.com | 8480 E. Orchard Rd., Ste., 4400, Greenwood Village, CO 80111 | 303-779-0169
www.myStrength.com

myStrength is an innovative self-help resource transforming evidence-based content that can augment treatment for depression, anxiety, and substance use. The web and mobile applications include interactive tools, action plans, daily inspiration, and learning modules.

 **Netsmart** #103 | Netsmart | 4950 College Boulevard, Overland Park, KS 66211 | 800-472-5509 | www.ntst.com

Netsmart designs, builds and delivers electronic health records (EHRs), solutions and services that are powerful, intuitive and easy-to-use. We make the complex simple and personalized so our clients can concentrate on what they do best: provide much-needed services and treatment that support whole-person care.

 **Neurocrine** #102 | Neurocrine Biosciences | 12780 El Camino Real, San Diego, CA 92130 | 858-617-6700 | www.neurocrine.com

Neurocrine Biosciences is a San Diego based biotechnology company focused on neurologic and endocrine related disorders.

 **ODYSSEY** #122 | Odyssey Software | 105 Bradford Rd., Suite 200, Wexford, PA 15090 | 724-940-4411 | www.tosg.com

Odyssey Software has been providing information technology services for the administrative functions of behavioral health agencies for over 20 years. Odyssey Software solutions include financial management, HCM and budgeting and planning tools to help you monitor and improve your operational outcomes.



#105 | Open Minds | 15 Lincoln Square, Gettysburg, PA 17325 | 717-334-1329 | www.openminds.com

OPEN MINDS is a national market intelligence and strategic advisory firm focused on the sectors of the health and human service field, serving consumers with chronic conditions and complex support needs. Founded in 1987, the firm's 175+ associates provide market insights and innovative management solutions designed to improve operational and strategic performance.



#112 | Peer Assistance Services, Inc. | 2170 S. Parker Rd., Suite 229, Denver, CO 80231 | 303-369-0039
www.PeerAssistanceServices.org
www.ShifttheInfluence.org

Peer Assistance Services, Inc. is a Colorado 501(c)(3) non-profit agency dedicated to quality, accessible prevention and intervention services in workplaces and communities, focused on substance use and related issues.



#128 | Provo Canyon School | 4501 North University Ave. Provo, UT 84604 | 800-848-9819 | www.provocanyon.com

Provo Canyon School is a leading national provider of residential youth treatment supporting the academic, therapeutic, and developmental needs for both boys and girls ages eight through eighteen. We have established a reputation for being a premier school and residential treatment program serving youth that are struggling with emotional, behavioral and academic challenges.



#124 | PsychPros, Inc. | 2404 Auburn Ave. | Cincinnati, OH 45219 | 513-651-9500 | www.psychpros.com

PsychPros is the premier behavioral health staffing and executive search firm, serving community mental health, managed care companies, hospitals, and addictions treatment facilities.



#125 | Rocky Mountain Crisis Partners | PO Box 460695, Denver, CO 80246 | 303-928-7100
www.metrocrisiservices.org

Rocky Mountain Crisis Partners (RMCP) is a statewide, 24/7, year-round, community-based system of crisis intervention services from which people experiencing mental health and/or substance abuse crises can be assessed, safely and effectively stabilized, and efficiently linked to appropriate follow-up care and services. RMCP, a regional system of crisis intervention, offers skilled, hope-filled care to individuals and families in crisis. We believe that whether it is the first or one of many experiences, if treated in an atmosphere of respect and compassion, crisis can be a unique opportunity for individuals and families to connect to life-changing treatment, support and education.



#133 | Streamline Healthcare Solutions | 510 East Butler Court, Kalamazoo, MI 49007 | 877-467-4741
www.streamlinehealthcare.com

Streamline Healthcare Solutions has been providing EHR software solutions to behavioral healthcare organizations since 2003. Our meaningful use certified system, SmartCare™, is a web-based, enterprise application built for the delivery, management, and coordination of healthcare services. Our solution is equipped to evolve as business needs develop.



#116 | SummitStone Health Partners | 125 Crestridge St., Fort Collins, CO 80525 | 970-494-4200
www.summitstonehealth.org

For more than 60 years, SummitStone Health Partners has been transforming lives through recovery, renewal and respect by providing compassionate behavioral health prevention, intervention and treatment services in Larimer County. SummitStone provides more than 50 services dedicated to treating mental health and substance use disorders for people of all ages.



The Colorado Health Foundation | *Sponsor of the CBHC TED Talks* | 1780 Pennsylvania St., Denver, CO 80203
303-953-3600 www.coloradohealth.org

The Colorado Health Foundation™

The Colorado Health Foundation is bringing health in reach for all Coloradans by engaging closely with communities across the state through investing, policy advocacy, learning and capacity building. For more information, please visit www.coloradohealth.org.



#127 | The Echo Group | 15 Washington Street, Conway
NH 03818 | 603-447-8600 | www.echoman.com

The Echo Group empowers customers to be the most clinically-effective and financially-strong by providing industry leading EHR, billing software, managed care and Revenue Cycle Management products and services. Save time, collect more money, and get the information you need to run your complex business with the power of the Visual Health Record.



#132 | The Office of Behavioral Health | 3824 W.
Princeton Circle, Denver, CO 80236 | 303-866-7400
www.colorado.gov/pacific/cdhs/behavioral-health

The Office of Behavioral Health (OBH) administers the two state mental health hospitals, purchases services to prevent and treat mental health and substance use disorders through contracts with behavioral health providers, regulates the public behavioral health system, and provides training, technical assistance, evaluation, data analysis, prevention services and administrative support to behavioral health providers and relevant stakeholders.



valant

#108 | Valant | 2033 6th Ave., Suite 500, Seattle, WA
98115 | 206-774-0532 | www.valant.com

Valant was founded in 2005 to provide behavioral health providers with EHR technology to streamline administration and empower what's most important: improving outcomes. Our completely new platform was born from modern, cloud architecture including an elastic and infinitely-scalable data model, mobile app-inspired user experience, and an on-demand ability to respond to change without additional investment in time, money, or training.

2018 CCMHA Conference

Annual Colorado Community Mental Health Associates

Fall Conference Program

October 9th, 10th, 11th

Welcoming support staff from across the state!

This year's workshops include Zero Suicide, LGBTQ Awareness, Human Trafficking, Chasing the Dragon/Opioid Epidemic in Colorado, and more.

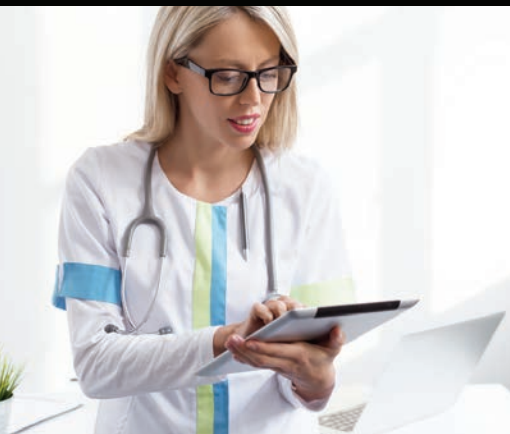
Please check our website for schedule and registration information.

www.colomhassociates.org

Remember to nominate your colleagues for the Pam Medina Award!

For more information contact: Jackie Roberts | Board President | JackieRoberts@aumhc.org

Better Integrated Care Begins with Better Tools



Improve Clinical Outcomes



Customize Forms—No Coding Required



Optimize Care Coordination



Lower Care Delivery Costs

Contact us for a demo today

HiMS Health Information Management Systems

EHR Solutions for Integrated Health Care

(866) 779-2575 | hmsfirst.com

Beaver Run Resort & Conference Center



COPPERTOP BAR & CAFE

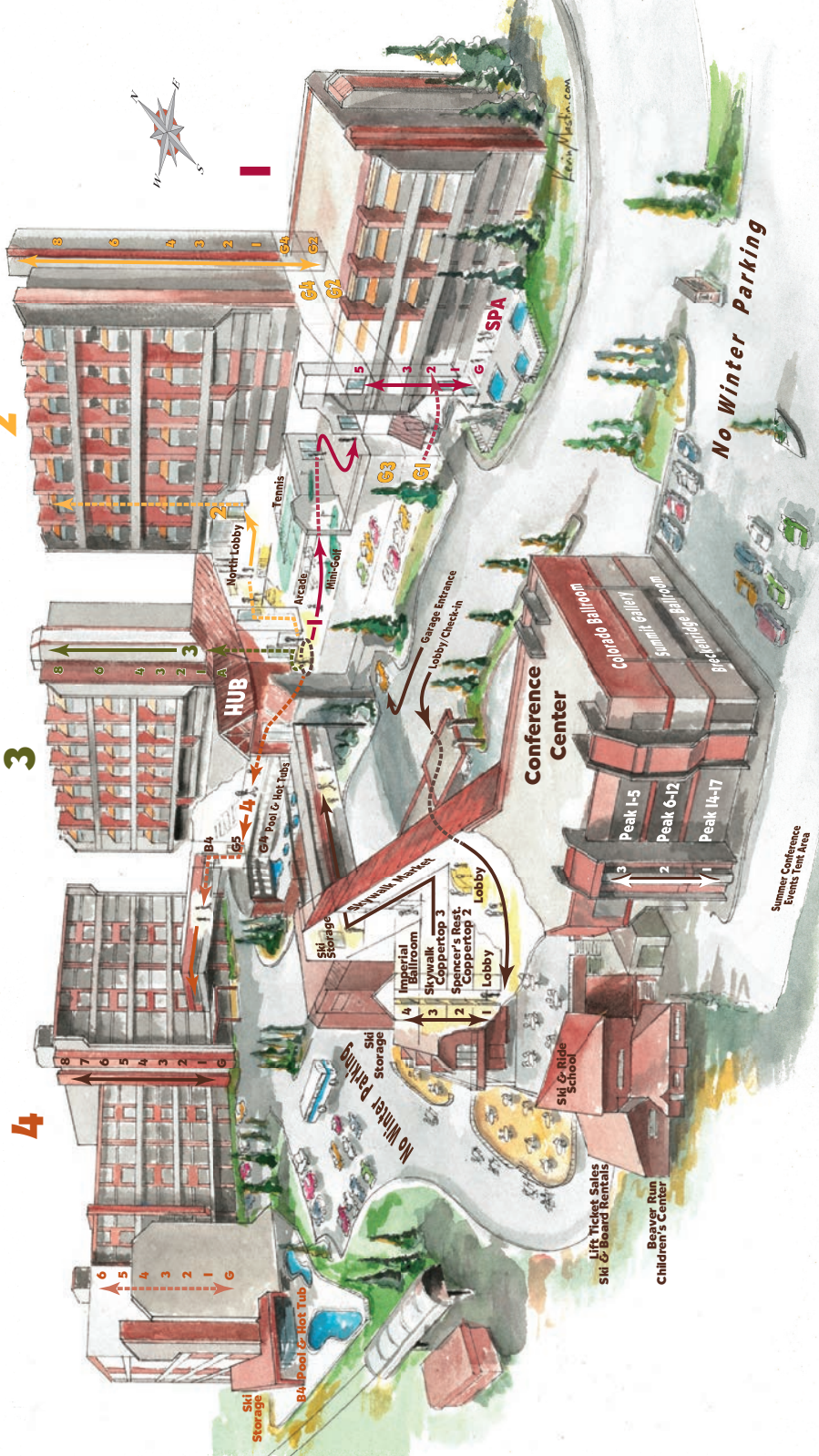


Beaver Run Resort & Conference Center

2

3

4



Summer Conference Exhibit Tent Area

No Winter Parking



Future

CBHC Conference Dates

Beaver Run Resort & Conference Center
Breckenridge, Colorado

2019 | September 25-28, 2019

2020 | September 30 - October 3, 2020

2021 | September 29 - October 2, 2021