



The Care Compact (TCC) is a project of the Douglas County Mental Health Initiative that supports individuals with mental health, substance use disorder, and/or intellectual and developmental disability (IDD) needs by linking existing case management and other service providers. Through a networked system of care, The Care Compact reduces duplication of services, improves transitions between levels of care, and ensures fewer gaps in treatment while producing better outcomes for members of our community.

TCC serves adults involved in multiple systems, with complex and overlapping needs, or in need of connection to a variety of services (e.g., mental health treatment, public benefits, in-home care, etc.) who would benefit from care coordination across organizations and resources. Cross-system care coordination “teams” or Care Teams are formed to holistically address an individual’s needs, including helping them navigate benefits and overcome barriers to care.

The Care Compact community partner agencies are dedicated to improving the quality of life for Douglas County residents. To demonstrate this level of commitment and accountability, TCC partner agencies have signed a Memorandum of Understanding and have collectively developed a universal release of information to streamline collaborative communication. The **TCC Partners** are as follows:

- [18th Judicial District Probation](#)
- [AllHealth Network](#)
- [AdventHealth](#)
- [Colorado Access](#)
- [Community Justice Services](#)
- [Developmental Pathways](#)
- [Douglas County Administration](#)
- [Douglas County Department of Human Services](#)
- [Douglas County Department of Community Development \(HEART and DC Cares\)](#)
- [Douglas County Sheriff’s Office Reintegration](#)
- [HealthONE](#)
- [Rocky Mountain Human Services](#)
- [Signal Behavioral Health Network](#)
- [The Community Response Team](#)
- [The Rock Church](#)

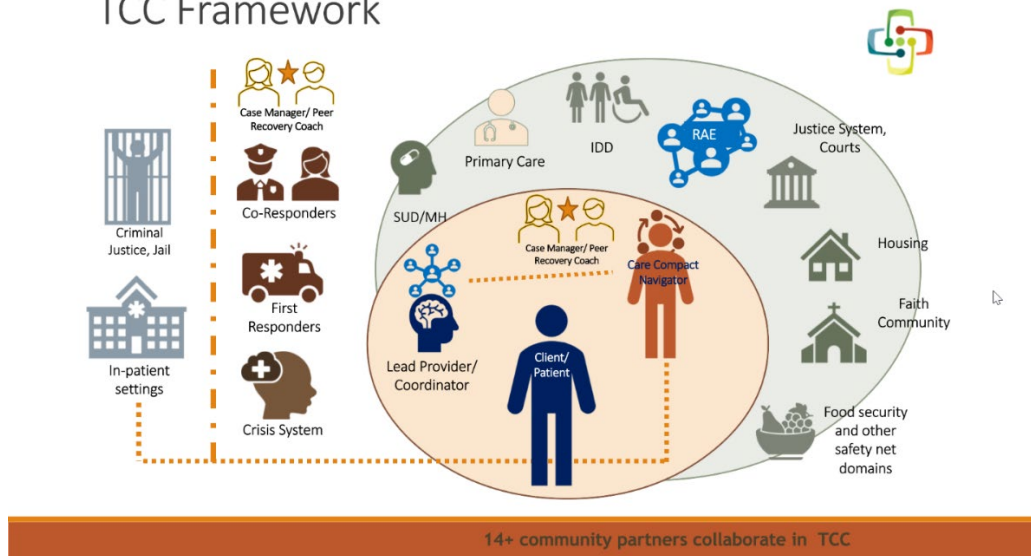


Julota as a Cross-Agency Care Coordination Platform: TCC uses a secure (HIPAA, CFR 42 Part 2, and CJIS compliant) information-sharing software called **Julota** to track progress, communicate between partners, and collect data for evaluation purposes. Julota transforms the disconnected patchwork of local service providers into a well-coordinated network that can proactively manage and support individuals, saving valuable dollars in healthcare and operational expenditures.



The Care Compact Framework: TCC strives to prevent or decrease engagement with emergency/criminal justice systems by offering a well-rounded care coordination team and treatment planning to attend to whole-person health needs. A **Lead Provider or Care Coordinator** is identified to drive the TCC team's focus and highlight client-centered goals. **The Care Compact Navigator** is employed by Douglas County and acts as the coordinator of the Care Team. The Care Compact Navigator and Lead work together to coordinate the care coordinators and delineate responsibilities to prevent duplication of services.

TCC Framework



AllHealth Network Dyad Program

The Dyad are dedicated positions including a Case Manager and Peer Recovery Coach employed by the Community Mental Health Center, AllHealth Network. These staff are assigned to provide case management and peer support to high risk, high need individuals served by the co-responder program, Community Response Team (CRT), and The Care Compact (TCC) programs. These individuals often have a serious mental illness with co-occurring substance use disorder, intellectual and developmental disabilities and struggling to meet basic needs. Through the use of outreach and engagement efforts these staff work as a bridge into behavioral health services designed to mitigate the crisis and restore access to basic needs.